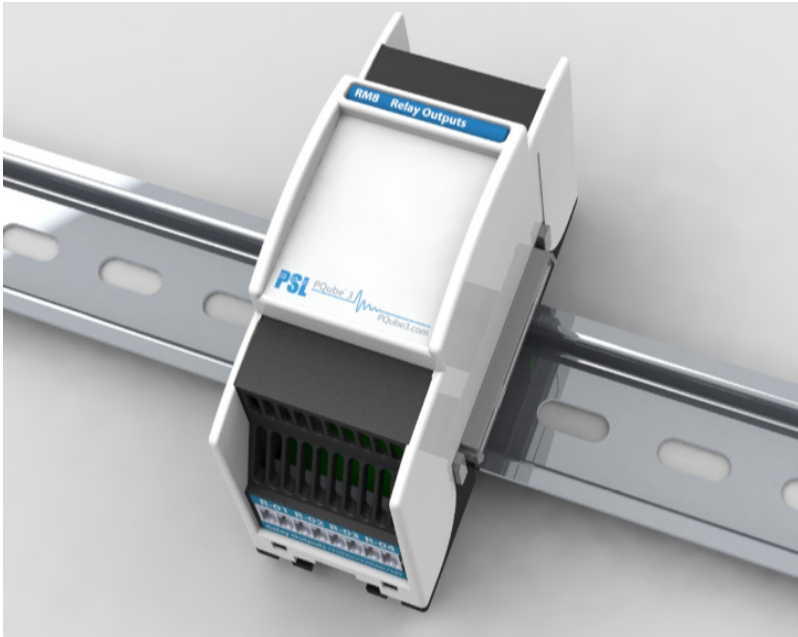


RM8 - Relay Extension Module



FEATURES

- Compact module, plugs-in to the left of the PQube 3 (PQube 3e). Auto detected by PQube 3
- Provides 8 individually programmable relays (signal relays)
- Allows load shedding to limit power consumption (Watts or VA)
- Multi-level (incremental) shedding (up to 8 thresholds)
- Up to 4* circuits monitored, up to 8 thresholds for all circuits

(*) 4 circuits with PQube 3e , 2 circuits with PQube3

OVERVIEW

You can now turn your PQube 3 into a powerful controller, and command the shedding of loads to protect your main distribution circuit from tripping.

The RM8 extension relay module snaps easily to your PQube3 (also PQube 3e) and its 8 relays are fully programmable.

This allows you to customize your load shedding scheme, by assigning incremental thresholds, or by applying the scheme to protect up to 4 circuits. And the PQube3 power Analyzer measures, reports in real time and records the power, VA, VARs and Power factor of all the circuits monitored

*Note: RM8 module relay needs to be programmed using the PQube 3 configurator.

| RM8 RELAY SPECIFICATION | |
|------------------------------|---|
| Number of relays | 8 (4 on each side of module) |
| Type | Latching relays |
| Rating | 2 Amps max at max 60VDC/30VAC |
| Operate time | < 20ms |
| Default state | User defined : Normally Closed (NC) or Normally Open (NO) |
| RM8 PROGRAMMING | |
| Trigger Parameter | On Active Power (Watts) or Apparent Power (VA) – parameter is averaged over 1second |
| Trigger Condition | Over/under a configurable threshold |
| Operation | The relay activates upon exceeding the threshold condition, remains active as long as the condition persists |
| RM8 TECHNICAL SPECIFICATIONS | |
| Dimensions (L X W X H) | 3.523in X 1.43 in X 3.08 in(metric 8.950cm X 3.632cm X 7.824cm) note: width includes interface connector: 1.786 in (metric 4.536 cm) |
| Installation | DIN rail mountable |

WIRING FOR MONITORING WITH ONE 3-PHASE LOAD

